

Forecasts for the UK Economy

A comparison of independent forecasts

Compiled by the Macroeconomic Prospects Team

July 2006

www.hm-treasury.gov.uk/forecasts



HM TREASURY

No.231

CONTENTS

| | |
|----------------|---|
| Page 3 | : Summary Page |
| Page 4 | : Table 1 - 2006: Growth in GDP and its components (% change) |
| Page 5 | : Table 2 - 2006: Growth in prices and monetary indicators (% change) |
| Page 6 | : Table 3 - 2006: Growth in other selected variables (% change) |
| Page 7 | : Table 4 - 2007: Growth in GDP and its components (% change) |
| Page 8 | : Table 5 - 2007: Growth in prices and monetary indicators (% change) |
| Page 9 | : Table 6 - 2007: Growth in other selected variables (% change) |
| Page 10 | : Average of independent forecasts for 2006; GDP growth, CPI & RPIX Inflation and Claimant Unemployment |
| Page 11 | : Average of independent forecasts for 2006; Current account and PSNB (2006-07, £billion) |
| Page 12 | : Average of independent forecasts for 2007; GDP growth, CPI & RPIX Inflation and Claimant Unemployment |
| Page 13 | : Average of independent forecasts for 2007; Current account and PSNB (2007-08, £billion) |
| Page 14 | : Range of Forecasts for 2006; GDP, CPI and Claimant Unemployment (millions) made in last 3 months |
| Page 15 | : Range of Forecasts for 2006; Current Account (£bn) and PSNB (2006-07, £bn) made in last 3 months |
| Page 16 | : Range of Forecasts for 2007; GDP, CPI and Claimant Unemployment (millions) made in last 3 months |
| Page 17 | : Range of Forecasts for 2007; Current Account (£bn) and PSNB (2007-08, £bn) made in last 3 months |
| Page 18 | : ANNEX 1: Forecasting institutions referred to in charts and tables |
| Page 19 | : ANNEX 2: Data Definitions |
| Page 20 | : ANNEX 3: Notation used in tables |
| Page 21 | : ANNEX 4: Organisation Contact Details |

Please note that Forecasts for the UK Economy is a summary of published material reflecting the views of the forecasting organisations themselves and does not in any way provide new information on the Treasury's own views. It contains only a selection of forecasters, which is subject to review. No significance should be attached to the inclusion or exclusion of any particular forecasting organisation. HM Treasury accepts no responsibility for the accuracy of material published in this comparison.

The averages and ranges in this document may be reproduced free of charge in any format or medium providing that it is reproduced accurately and not used in a misleading context. The data remain the copyright of those organisations providing it - permission to reproduce it must be sought from both HM Treasury and the providers of the original data.

Users should note that the Treasury crest (which incorporates the Royal Coat of Arms) may not be used or reproduced for any purpose without specific permission. Permission to use or reproduce the Treasury crest should be sought from HM Treasury.

Payment of the subscription fee is £75. Cheques should be made payable to "HM Treasury votes cash Account", and should be sent to Tessa Caruth, Public Enquiry Unit, 2/W1, HM Treasury, 1 Horse Guards Road, London, SW1A 2HQ. Could fee paying subscribers direct enquiries to Tessa Caruth on 020 7270 4858. Free subscribers should contact Sion Alun Sheppard on 020 7270 4379. "Forecasts for the UK Economy" is compiled and coordinated by Sion Alun Sheppard. Please direct enquiries on the contents of this issue to Sion Alun Sheppard (020 7270 4379, sion.sheppard@hm-treasury.x.gsi.gov.uk).

The next edition will be published on 16th August 2006. It will also be available on the Treasury's Internet site: <http://www.hm-treasury.gov.uk> under 'Economic Data and Tools'.

FORECASTS FOR THE UK ECONOMY
A comparison of independent forecasts, July 2006

This edition of the comparison contains 21 new forecasts, all of which were received between the 1st of July and the 12th of July. The tables below summarise the average and range of independent forecasts for 2006 and 2007 and show the average of this month's new forecasts.

| Forecasts for 2006 | Independent ⁺ | | | | Average of new* forecasts |
|--------------------------------|--------------------------|-------|--------|---------|---------------------------|
| | Averages | | July | | |
| | July | June | Lowest | Highest | |
| GDP growth (per cent) | 2.4 | 2.3 | 1.5 | 2.7 | 2.4 |
| Inflation rate (Q4: per cent) | | | | | |
| - CPI | 2.1 | 2.1 | 1.5 | 2.6 | 2.2 |
| - RPI | 2.7 | 2.7 | 1.9 | 3.8 | 2.9 |
| Claimant unemployment (Q4: mn) | 0.99 | 0.99 | 0.90 | 1.10 | 0.99 |
| Current account (£bn) | -34.4 | -33.0 | -47.1 | -24.0 | -35.0 |
| PSNB (2006-07: £bn) | 37.9 | 37.7 | 33.1 | 44.0 | 38.5 |

| Forecasts for 2007 | Independent ⁺ | | | | Average of new* forecasts |
|--------------------------------|--------------------------|-------|--------|---------|---------------------------|
| | Averages | | July | | |
| | July | June | Lowest | Highest | |
| GDP growth (per cent) | 2.4 | 2.5 | 0.3 | 3.2 | 2.4 |
| Inflation rate (Q4: per cent) | | | | | |
| - CPI | 1.9 | 2.0 | 1.2 | 3.1 | 1.9 |
| - RPI | 2.4 | 2.4 | 1.5 | 3.5 | 2.4 |
| Claimant unemployment (Q4: mn) | 1.04 | 1.03 | 0.90 | 1.40 | 1.04 |
| Current account (£bn) | -35.2 | -33.9 | -56.1 | -16.0 | -35.8 |
| PSNB (2007-08: £bn) | 37.1 | 36.8 | 29.0 | 51.0 | 37.4 |

+ Independent and City averages, and the range of forecasts, are based on forecasts made in the last three months (July: 21 institutions, June: 8 institutions, May: 7 institutions)

*Calculated from new forecasts received for the comparison this month

Note: All the averages exclude non-standard entries (see footnotes a to ss)

Table 1 - 2006: Growth in GDP and its components (% change)

July 2006 Comparison

| Forecasters & dates of forecasts | | GDP | Private Consumption | Government Consumption | Fixed Investment | Change in Inventories (£bn) | Domestic Demand | Total Exports | Total Imports | Net Trade Contribution |
|---|-------|---------|---------------------|------------------------|------------------|-----------------------------|-----------------|---------------|---------------|------------------------|
| City Forecasters | | | | | | | | | | |
| ABN AMRO | Jul * | 2.5 | 2.0 | 3.6 | 3.8 f | - | - | 9.8 | 9.8 | - |
| Bank of America | Jul * | 2.6 | 2.1 | 1.8 | 4.9 | 4.9 | 2.6 | 10.9 | 10.0 | -0.1 |
| Barclays Capital | Jul * | 2.6 | 2.2 | 3.8 | 4.2 | 3.3 | 3.0 | 10.0 | 10.4 | -0.5 |
| BNP Paribas | Apr | 2.6 | 2.5 | 2.6 | 3.9 | -0.1 | 2.6 | 5.5 | 5.2 | -0.1 |
| Bridgewell | Jul * | 2.6 | 2.7 | 1.6 | 4.6 | 3.9 | 2.8 | 10.5 | 10.5 | -0.4 |
| Capital Economics | Jul * | 2.5 | 2.0 | 1.3 | 4.5 | 3.1 | 2.3 | 12.5 | 10.7 | 0.2 |
| Citigroup | Jul * | 2.5 | 2.0 | 1.8 | 7.0 | 4.2 | 2.9 | 11.4 | 11.6 | -0.4 |
| Commerzbank | Jul * | 2.5 | 1.8 | 1.9 | 5.3 | 4.1 | 2.5 | 14.1 | 12.8 | -0.1 |
| Credit Suisse First Boston | Jan | 2.3 | 2.5 | 2.2 | 4.5 | 1.6 | 2.6 | 5.8 | 6.3 | -0.4 |
| Daiwa Institute of Research | Jun | 2.4 | 2.3 | 3.1 | 3.0 | 1.3 | 2.7 | 9.1 | 9.2 | - |
| Daiwa Securities SMBC | May | 2.3 | 1.6 | 2.7 | 2.5 | 1.8 | 1.9 | 6.2 | 4.5 | 0.3 |
| Deutsche Bank | Jan | 2.0 | 1.8 | 2.0 | 3.3 | 5.3 | 2.0 | 4.6 | 5.0 | -0.3 |
| Dresdner Kleinwort Wasserstein | Jul * | 2.3 | 1.9 | 1.6 | 4.3 | - | 2.4 | - | - | -0.1 |
| Economic Perspectives | Jul * | 1.5 | 1.4 | 2.1 | 2.3 | 3.6 | 1.7 | 8.5 | 8.4 | -0.3 |
| Fortis Bank | Dec | 2.5 | 2.1 | 2.0 | 5.2 | - | 2.4 | 8.1 | 6.8 | 0.2 |
| Goldman Sachs | Jul * | 2.7 | 2.2 | 3.6 | 2.6 | 0.1 h | 2.6 | 11.0 | 9.7 | 0.0 |
| Hermes | Jun | 2.0 | 1.9 | 3.0 | 3.2 | 2.7 | 2.4 | 9.6 | 9.9 | -0.5 |
| HSBC | May | 2.1 | 2.0 | 2.4 | 3.7 | - | 2.3 | 4.9 | 5.3 | - |
| ING Financial Markets | Jul * | 2.3 | 1.6 | 1.9 | 4.7 | 3.0 | 2.4 | 8.8 | 8.4 | -0.1 |
| J P Morgan | Jun | 2.6 | 2.2 | 3.7 | 3.7 | 4.7 | 2.9 | 10.4 | 10.4 | -0.4 |
| Lehman Brothers | Jul * | 2.4 | 1.9 | 1.7 | 4.7 | 1.6 | 2.1 | 9.9 | 8.3 | 0.2 |
| Lombard Street | May | 2.6 | 2.4 | 2.5 | 4.5 | 2.5 | 2.8 | 6.0 | 6.2 | -0.3 |
| MacroEcon.com | Jul * | 2.6 | 2.4 | 2.6 | 2.6 | 3.3 | 2.6 | 9.5 | 8.5 | - |
| Morgan Stanley | Jul * | 2.4 | 1.7 | 2.5 | 3.1 | 6.8 | 2.3 | 11.5 | 10.2 | 0.0 |
| RBS Financial Markets | Jul * | 2.6 | 2.0 | 5.5 | 5.5 | 5.4 | 2.8 | 11.5 | 11.2 | -0.2 |
| Schroders Investment Management | Jan | 1.7 | 1.6 | 1.9 | 2.3 | - | 1.8 | 4.9 | 4.8 | -0.1 |
| Standard Chartered Bank | Jun | 2.1 | 1.7 | 2.5 | 4.6 | 2.5 | 2.2 | 3.8 | 3.9 | -0.2 |
| UBS | Jun | 2.4 | 2.0 | 3.3 | 3.8 | 0.1 | 2.7 | 10.0 | 10.0 | -0.4 |
| WestLB AG | Jun | 2.0 | 1.7 | 3.3 | 2.7 | 4.2 | 2.4 | 9.0 | 9.6 | -0.5 |
| Williams de Broe | Jun | 2.5 | 2.1 | 3.5 | 4.8 | 3.9 | 3.0 | 8.8 | 9.6 | -0.7 |
| Non-City Forecasters | | | | | | | | | | |
| Cambridge Econometrics | May | 2.2 | 2.0 | 2.8 | 3.6 | 1.0 | 2.3 | 6.6 | 6.6 | -0.2 |
| CBI | Jun | 2.4 | 2.2 | 2.5 | 4.5 | 4.9 | 2.8 | 7.7 | 8.4 | -0.5 |
| CEBR | Jul * | 2.6 | 2.4 | 3.2 | 2.3 | 4.6 | 2.9 | - | - | - |
| Experian Business Strategies | Jul * | 2.4 | 2.2 | 3.2 | 2.4 | 3.8 | 2.5 | 8.7 | 8.4 | -0.2 |
| EIU | Jan | 1.8 | 1.7 | 1.7 | 2.4 | - | 1.7 | 4.6 | 3.9 | 0.1 |
| Global Insight | Jul * | 2.6 | 1.9 | 1.9 | 4.7 | - | 2.6 | 11.9 | 10.9 | 0.0 |
| ITEM Club | May | 2.3 | 2.0 | 3.2 | 1.8 | 0.0 | 2.2 | 6.7 | 5.8 | 0.0 |
| Liverpool Macro Research | Jul * | 2.1 | 1.9 c | 4.6 d | 1.2 e | - | - | - | - | - |
| Moody's Economy.com | Jul * | 2.2 | 1.9 | 2.8 | 1.7 | -0.6 | 1.8 | 3.2 | 4.9 | - |
| NIESR | Apr | 2.5 | 2.2 | 2.5 | 3.4 | 2.4 r | 2.5 | 6.1 | 5.9 | -0.2 |
| OEF | Jul * | 2.6 | 2.0 | 1.8 | 5.1 | 5.6 | 2.7 | 10.4 | 10.0 | -0.2 |
| EC | May | 2.4 | 1.9 | 3.0 | 3.4 | 0.0 h | 2.5 | 5.9 | 5.2 | 0.0 |
| OECD | May | 2.4 | 2.1 | 2.5 | 3.1 | 0.0 h | 2.4 | 7.3 | 6.7 | -0.1 |
| IMF | Apr | 2.5 | 2.5 | 3.2 | 2.5 | -0.1 h | 2.5 | 5.7 | 5.3 | -0.1 |
| Average of Forecasts made in the last 3 months | | | | | | | | | | |
| Independent | | 2.4 | 2.0 | 2.7 | 3.8 | 3.2 | 2.5 | 9.0 | 8.7 | -0.2 |
| New (marked *) | | 2.4 | 2.0 | 2.5 | 4.0 | 3.8 | 2.5 | 10.2 | 9.7 | -0.1 |
| City | | 2.4 | 2.0 | 2.7 | 4.0 | 3.4 | 2.5 | 9.5 | 9.1 | -0.2 |
| Range of Forecasts made in the last 3 months | | | | | | | | | | |
| Highest | | 2.7 | 2.7 | 5.5 | 7.0 | 6.8 | 3.0 | 14.1 | 12.8 | 0.3 |
| Lowest | | 1.5 | 1.4 | 1.3 | 1.7 | -0.6 | 1.7 | 3.2 | 3.9 | -0.7 |
| Median | | 2.4 | 2.0 | 2.6 | 3.8 | 3.5 | 2.5 | 9.5 | 9.6 | -0.2 |
| HM Treasury | Mar | 2 to 2½ | 2 to 2½ | 2½ | 1¼ to 2 | 1.1 to 1.9 | 2 to 2¼ | 5 to 5½ | 4¼ to 4¾ | 0 |

Table 2 - 2006: Growth in prices and monetary indicators (% change)

July 2006 Comparison

| Forecasters & dates of forecasts | | CPI (Q4) | RPI (Q4) | RPIX (Q4) | Average Earnings | Sterling Index (Q4) | Bank of England Repo Rate (Q4, %) | Oil price (\$) | M4 |
|---|-------|----------|----------|-----------|------------------|---------------------|-----------------------------------|----------------|--------|
| City Forecasters | | | | | | | | | |
| ABN AMRO | Jul * | 2.0 | - | 2.4 | 5.0 gg | - | 4.75 | - | - |
| Bank of America | Jul * | 2.0 | - | 2.6 | 3.9 | - | 4.50 | 65.0 | - |
| Barclays Capital | Jul * | 2.4 | 3.1 | 2.8 | 4.7 | 98.8 | 4.75 | - | - |
| BNP Paribas | Apr | 2.5 | 3.5 | 3.0 | 3.8 | - | 4.75 | - | - |
| Bridgewell | Jul * | 2.6 | 3.8 | 3.2 | 4.2 | 95.7 | 5.00 | - | 11.7 |
| Capital Economics | Jul * | 2.0 | 2.7 | 2.5 | 3.8 | 100.8 | 4.50 | 60.0 | 11.2 |
| Citigroup | Jul * | 2.0 | 3.0 | 2.7 | 4.0 | 100.0 | 4.50 | 67.4 | - |
| Commerzbank | Jul * | 2.2 | 2.7 | 2.8 | 4.2 | 98.5 | 4.50 | 64.6 | - |
| Credit Suisse First Boston | Jan | 1.8 | 2.1 | 1.8 | - | - | 4.50 | - | - |
| Daiwa Institute of Research | Jun | 2.1 | 2.9 | 2.4 | 4.3 | 103.0 | 4.50 | 66.9 | - |
| Daiwa Securities SMBC | May | 1.9 | 2.1 | 1.9 | 3.8 | - | 4.50 | 65.0 | - |
| Deutsche Bank | Jan | 1.6 | 2.0 | 2.0 | 4.2 | 97.2 | 4.00 | 60.0 | 6.4 |
| Dresdner Kleinwort Wasserstein | Jul * | 2.0 | 2.4 | - | 4.0 | - | 4.50 | - | - |
| Economic Perspectives | Jul * | 2.4 | 2.5 | 2.5 | 3.8 | 96.0 | 4.40 | 65.0 | 11.0 |
| Fortis Bank | Dec | 1.8 | - | - | 4.2 | - | 4.50 | 60.0 | - |
| Goldman Sachs | Jul * | 2.2 | - | 2.5 | 4.5 | 96.0 j | 4.90 js | 70.6 | 10.7 j |
| Hermes | Jun | 1.8 | 2.6 | 2.3 | 4.2 | 98.0 | 4.50 | - | - |
| HSBC | May | 2.1 | 2.1 | 2.1 | 3.9 | 96.1 | 4.25 | - | - |
| ING Financial Markets | Jul * | 2.0 | - | - | 4.2 | - | 4.75 | 68.0 | - |
| J P Morgan | Jun | 1.9 | - | - | - | - | 4.75 | - | - |
| Lehman Brothers | Jul * | 2.1 | 2.9 | 2.5 | 4.0 | 98.0 | 4.50 | - | - |
| Lombard Street | May | 1.8 | 2.3 | 2.2 | 4.3 | 102.2 | 4.50 | 50.0 | 10.6 |
| MacroEcon.com | Jul * | 2.6 | 3.0 | 2.8 | 4.4 | 104.2 | 4.75 | 68.0 | 13.0 |
| Morgan Stanley | Jul * | 2.4 | 3.2 | 2.9 | 4.0 | 97.4 j | 4.75 | 72.1 | - |
| RBS Financial Markets | Jul * | 2.0 | 3.0 | 2.7 | 4.1 | 99.5 | 4.50 | 67.1 | - |
| Schroders Investment Management | Jan | 1.8 | 1.8 | 1.6 | 4.0 | - | 3.75 | 50.5 | - |
| Standard Chartered Bank | Jun | 1.5 | - | - | 4.2 | - | 4.50 | 60.0 | - |
| UBS | Jun | 2.1 | 2.4 | 2.4 | 3.9 | - | 4.75 | - | - |
| WestLB AG | Jun | 2.2 | 2.8 | 2.3 | 3.6 | - | 4.50 | 70.0 | 10.5 |
| Williams de Broe | Jun | 1.9 | 2.4 | 2.4 | 4.5 | 99.4 r | 4.80 | 68.2 | 11.0 |
| Non-City Forecasters | | | | | | | | | |
| Cambridge Econometrics | May | 2.0 k | 2.3 k | 2.1 k | 4.2 n | 103.1 k | 4.50 ks | 65.1 | - |
| CBI | Jun | 2.3 | 2.5 | 2.2 | 4.2 | 101.0 r | 4.50 | 65.3 ii | - |
| CEBR | Jul * | 2.1 | 3.1 | 2.8 | 3.8 | - | 4.50 | 68.5 | - |
| Experian Business Strategies | Jul * | 2.2 | 3.0 | 2.7 | 4.4 | 96.4 | 4.50 | 62.0 | - |
| EIU | Jan | 1.9 | - | - | 3.9 | 97.4 | 4.25 | 55.0 | - |
| Global Insight | Jul * | 2.0 | 2.7 | 2.6 | 4.2 | - | 4.50 | 66.2 | 11.7 |
| ITEM Club | May | 2.0 | 2.7 | 2.6 | 4.3 | 100.0 | 4.50 | 65.0 | 10.5 |
| Liverpool Macro Research | Jul * | - | - | 2.0 | 4.2 | 99.4 | 4.40 | - | - |
| Moody's Economy.com | Jul * | 1.7 | 1.9 | 1.5 | 3.0 | - | 4.75 | 63.6 | 12.4 |
| NIESR | Apr | 2.4 | 2.8 k | 2.6 k | 4.4 r | 99.2 r | 4.70 s | 61.4 v | - |
| OEF | Jul * | 2.2 | 3.0 | 2.7 | 4.2 | 102.6 | 4.50 | 67.8 | 12.6 |
| EC | May | 2.0 | - | - | 4.3 gg | - | - | - | - |
| OECD | May | 2.1 k | - | - | 5.1 gg | - | 4.50 s | - | - |
| IMF | Apr | 1.9 | - | - | - | - | - | - | - |
| Average of Forecasts made in the last 3 months | | | | | | | | | |
| Independent | | 2.1 | 2.7 | 2.5 | 4.1 | 99.4 | 4.57 | 65.5 | 11.5 |
| New (marked *) | | 2.2 | 2.9 | 2.6 | 4.1 | 99.2 | 4.59 | 66.4 | 11.9 |
| City | | 2.1 | 2.7 | 2.5 | 4.1 | 99.3 | 4.59 | 65.5 | 11.3 |
| Range of Forecasts made in the last 3 months | | | | | | | | | |
| Highest | | 2.6 | 3.8 | 3.2 | 4.7 | 104.2 | 5.00 | 72.1 | 13.0 |
| Lowest | | 1.5 | 1.9 | 1.5 | 3.0 | 95.7 | 4.25 | 50.0 | 10.5 |
| Median | | 2.0 | 2.7 | 2.5 | 4.2 | 99.4 | 4.50 | 66.2 | 11.2 |
| HM Treasury | Mar | 2 | - | - | - | - | - | - | - |

Table 3 - 2006: Growth in other selected variables (% change)

July 2006 Comparison

| Forecasters & dates of forecasts | | Real Household Disposable Income | Employment Growth | Claimant Unemployment (Q4,millions) | Manufacturing Output | World Trade in Manufactures | Current account (£bn) | PSNB (£bn 2006-07) |
|---|-------|----------------------------------|-------------------|-------------------------------------|----------------------|-----------------------------|-----------------------|--------------------|
| City Forecasters | | | | | | | | |
| ABN AMRO | Jul * | 2.3 | - | 1.62 a | - | - | -54.8 tt | 35.2 |
| Bank of America | Jul * | - | - | - | 0.9 | 7.4 | -26.8 | 41.9 |
| Barclays Capital | Jul * | 2.5 | 0.8 | 0.99 | 1.3 | - | -37.4 | 38.0 cc |
| BNP Paribas | Apr | - | 0.7 | - | 0.1 | - | -25.4 | 37.5 |
| Bridgewell | Jul * | 2.2 | 0.9 | 0.94 | 1.1 | - | -40.1 | 39.6 |
| Capital Economics | Jul * | 2.5 | 0.3 | 1.00 | 1.0 | 8.5 | -32.0 | 37.0 |
| Citigroup | Jul * | 2.5 | 0.6 | 1.06 | 0.5 | - | -42.0 | 37.5 |
| Commerzbank | Jul * | 1.8 | 0.7 | 0.97 | 0.6 | 8.0 w | -30.6 | 39.7 |
| Credit Suisse First Boston | Jan | - | - | 1.10 | - | - | -30.0 | 35.0 |
| Daiwa Institute of Research | Jun | 2.4 | 0.6 | 0.95 | 0.6 | 8.5 | -34.6 | 35.0 |
| Daiwa Securities SMBC | May | - | -0.1 | 1.00 | - | - | -25.0 | 39.0 cc |
| Deutsche Bank | Jan | - | 0.5 | 1.02 | -0.6 | - | -26.0 | 38.0 |
| Dresdner Kleinwort Wasserstein | Jul * | - | - | - | - | - | -25.0 | 39.0 |
| Economic Perspectives | Jul * | 0.5 | -0.3 | 1.10 | 0.5 | 8.0 | -24.0 | 44.0 |
| Fortis Bank | Dec | - | - | 0.95 | - | 7.0 | -25.0 | 34.0 |
| Goldman Sachs | Jul * | - | 1.0 | 1.70 a | 1.2 | - | -40.6 | 38.5 |
| Hermes | Jun | - | 0.0 | 1.00 | - | - | -30.0 | - |
| HSBC | May | - | - | 1.10 | 0.7 | - | -40.0 | - |
| ING Financial Markets | Jul * | - | - | 0.97 | 0.6 | - | -32.0 | 39.0 |
| J P Morgan | Jun | - | - | - | 0.4 | - | -41.4 | 35.0 |
| Lehman Brothers | Jul * | 2.4 | 0.4 | 1.06 | 0.4 | - | -39.7 | 38.0 |
| Lombard Street | May | 2.7 | 0.8 | 1.03 | 1.5 | - | -28.4 | 40.0 |
| MacroEcon.com | Jul * | - | 0.8 | 0.92 | - | 5.5 | -32.0 | 37.0 |
| Morgan Stanley | Jul * | 2.3 | 0.7 | - | 0.8 | - | - | 38.3 |
| RBS Financial Markets | Jul * | 2.1 | 0.7 | 0.95 | 1.0 | 5.7 | -37.1 | 35.8 |
| Schroders Investment Management | Jan | - | -0.2 | 1.10 | 0.9 | - | -21.0 | 44.0 |
| Standard Chartered Bank | Jun | - | - | 0.95 | - | - | -32.0 | 35.0 |
| UBS | Jun | - | - | 0.90 | 0.6 | - | -32.9 | 37.8 |
| WestLB AG | Jun | - | 1.0 | - | 0.5 | - | -31.2 | - |
| Williams de Broe | Jun | - | 0.4 | 0.98 | -0.2 | 8.7 | -41.3 | 34.5 |
| Non-City Forecasters | | | | | | | | |
| Cambridge Econometrics | May | 2.3 | 0.7 | 1.00 k | 0.5 | 3.5 hh | -27.2 | 46.2 kcc |
| CBI | Jun | 2.1 | 0.4 | 0.99 | 1.0 | 8.6 | -38.6 | 36.1 |
| CEBR | Jul * | 1.8 | 0.6 | 0.99 | 2.0 | - | -33.2 | 39.8 |
| Experian Business Strategies | Jul * | 1.9 | 0.3 | 1.01 | 0.8 | 10.5 | -47.1 | 39.8 |
| EIU | Jan | 1.9 | 0.2 | 1.06 | 0.8 | 7.0 | -25.2 | 38.9 |
| Global Insight | Jul * | 2.5 | 0.8 | 0.97 | 0.8 | - | -30.6 | 39.4 |
| ITEM Club | May | 2.2 | 0.6 | 1.01 | 0.4 | 8.0 | -31.1 | 40.0 |
| Liverpool Macro Research | Jul * | - | - | 0.93 | - | - | -36.8 | 35.2 cc |
| Moody's Economy.com | Jul * | 2.7 | 0.8 | 1.00 | 0.1 | - | -46.7 | - |
| NIESR | Apr | 2.2 | 0.3 | 0.97 k | 1.0 | 7.2 w | -34.6 | 38.1 |
| OEF | Jul * | 2.0 | 0.6 | 0.96 | 0.9 | 8.6 | -32.1 | 33.1 |
| EC | May | - | 0.4 | 5.00 aak | - | - | -3.3 g | 3.0 kqq |
| OECD | May | - | 0.3 | 5.30 aak | - | - | -2.4 g | 3.4 eeg |
| IMF | Apr | - | 0.4 | 4.90 aak | - | 8.0 w | -2.7 g | 3.1 eeg |
| Average of Forecasts made in the last 3 months | | | | | | | | |
| Independent | | 2.2 | 0.6 | 0.99 | 0.8 | 8.0 | -34.4 | 37.9 |
| New (marked *) | | 2.1 | 0.6 | 0.99 | 0.9 | 7.7 | -35.0 | 38.5 |
| City | | 2.2 | 0.6 | 0.99 | 0.7 | 7.5 | -33.7 | 37.9 |
| Range of Forecasts made in the last 3 months | | | | | | | | |
| Highest | | 2.7 | 1.0 | 1.10 | 2.0 | 10.5 | -24.0 | 44.0 |
| Lowest | | 0.5 | -0.3 | 0.90 | -0.2 | 5.5 | -47.1 | 33.1 |
| Median | | 2.3 | 0.6 | 0.99 | 0.7 | 8.5 | -32.5 | 38.2 |
| HM Treasury | Mar | 2½ to 2¾ | - | - | ½ to 1 | 7¼ w | -32¾ | 36 |

Table 4 - 2007: Growth in GDP and its components (% change)

July 2006 Comparison

| Forecasters & dates of forecasts | | GDP | Private Consumption | Government Consumption | Fixed Investment | Change in Inventories (£bn) | Domestic Demand | Total Exports | Total Imports | Net Trade Contribution |
|---|-------|----------|---------------------|------------------------|------------------|--------------------------------|-----------------|---------------|---------------|---------------------------|
| City Forecasters | | | | | | | | | | |
| ABN AMRO | Jul * | 2.7 | 2.4 | 2.8 | 3.2 f | - | - | 6.1 | 5.9 | - |
| Bank of America | Jul * | 2.4 | 2.1 | 1.9 | 3.3 | 4.2 | 2.3 | 3.8 | 3.1 | 0.1 |
| Barclays Capital | Jul * | 3.0 | 2.5 | 2.8 | 5.5 | 2.0 | 3.0 | 4.9 | 4.5 | -0.1 |
| BNP Paribas | Apr | 2.7 | 2.8 | 2.3 | 4.6 | 0.4 | 3.0 | 4.8 | 5.4 | -0.4 |
| Bridgewell | Jul * | 2.7 | 3.0 | 2.5 | 3.5 | 2.3 | 2.8 | 6.8 | 6.7 | -0.2 |
| Capital Economics | Jul * | 2.2 | 2.5 | 2.0 | 2.5 | 2.6 | 2.3 | 2.2 | 2.5 | -0.1 |
| Citigroup | Jul * | 2.6 | 2.2 | 2.2 | 7.9 | 0.8 | 2.9 | 5.2 | 5.7 | -0.3 |
| Commerzbank | Jul * | 2.5 | 2.1 | 2.5 | 3.9 | 2.0 | 2.3 | 5.1 | 4.2 | 0.2 |
| Credit Suisse First Boston | Jan | - | - | - | - | - | - | - | - | - |
| Daiwa Institute of Research | Jun | 2.5 | 2.4 | 2.3 | 3.8 | 2.6 | 2.6 | 5.4 | 5.1 | - |
| Daiwa Securities SMBC | May | 2.5 | 1.8 | 1.6 | 4.4 | 2.0 | 2.3 | 5.0 | 3.8 | 0.2 |
| Deutsche Bank | Jan | - | - | - | - | - | - | - | - | - |
| Dresdner Kleinwort Wasserstein | Jul * | 1.9 | 1.8 | 2.0 | 2.7 | - | 2.0 | - | - | -0.1 |
| Economic Perspectives | Jul * | 0.3 | 0.2 | 1.3 | -3.3 | 0.0 | -0.4 | 2.1 | -0.3 | 0.7 |
| Fortis Bank | Dec | - | - | - | - | - | - | - | - | - |
| Goldman Sachs | Jul * | 2.4 | 2.2 | 2.8 | 1.5 | 0.0 h | 2.1 | 4.4 | 3.0 | 0.3 |
| Hermes | Jun | 2.0 | 2.3 | 1.2 | 2.0 | 4.4 | 2.2 | 3.9 | 4.2 | -0.3 |
| HSBC | May | 2.4 | 2.1 | 2.3 | 3.5 | - | 2.3 | 3.4 | 3.2 | - |
| ING Financial Markets | Jul * | 2.0 | 1.9 | 2.0 | 3.2 | 0.7 | 2.2 | 3.9 | 4.3 | -0.2 |
| J P Morgan | Jun | 2.9 | 2.3 | 2.6 | 4.0 | 3.4 | 2.5 | 7.0 | 5.3 | 0.3 |
| Lehman Brothers | Jul * | 2.5 | 1.4 | 2.5 | 3.8 | 1.9 | 2.0 | 3.9 | 2.4 | 0.4 |
| Lombard Street | May | 2.0 | 2.1 | 2.5 | 3.6 | 2.5 | 2.4 | 3.2 | 4.4 | -0.5 |
| MacroEcon.com | Jul * | 2.7 | 3.2 | 2.2 | 2.8 | 3.3 | 3.1 | 8.0 | 7.5 | - |
| Morgan Stanley | Jul * | 2.5 | 1.8 | 2.5 | 2.0 | 10.6 | 2.3 | 3.5 | 2.9 | 0.1 |
| RBS Financial Markets | Jul * | 2.7 | 2.6 | 3.9 | 3.9 | 4.0 | 2.7 | 4.5 | 4.3 | 0.0 |
| Schroders Investment Management | Jan | 2.4 | 2.5 | 1.5 | 2.8 | - | 2.6 | 4.6 | 4.6 | -0.2 |
| Standard Chartered Bank | Jun | 2.5 | 1.8 | 2.0 | 4.8 | 2.8 | 2.4 | 3.8 | 3.3 | 0.0 |
| UBS | Jun | 2.6 | 2.8 | 2.3 | 4.0 | 0.0 | 2.9 | 4.2 | 4.7 | -0.3 |
| WestLB AG | Jun | 2.0 | 2.0 | 1.4 | 2.4 | 5.3 | 2.0 | 3.7 | 3.4 | -0.1 |
| Williams de Broe | Jun | 3.2 | 2.7 | 2.5 | 3.4 | 3.9 | 2.8 | 5.2 | 3.6 | 0.4 |
| Non-City Forecasters | | | | | | | | | | |
| Cambridge Econometrics | May | 2.7 | 2.5 | 2.8 | 3.8 | 1.4 | 2.8 | 5.6 | 5.5 | -0.1 |
| CBI | Jun | 2.5 | 2.3 | 2.5 | 4.1 | 2.9 | 2.5 | 5.0 | 4.7 | -0.1 |
| CEBR | Jul * | 2.3 | 2.2 | 2.6 | 3.0 | 2.6 | 2.2 | - | - | - |
| Experian Business Strategies | Jul * | 2.7 | 2.3 | 1.3 | 2.1 | 4.7 | 2.2 | 4.9 | 3.1 | 0.4 |
| EIU | Jan | - | - | - | - | - | - | - | - | - |
| Global Insight | Jul * | 2.6 | 2.3 | 2.2 | 3.4 | - | 2.7 | 5.1 | 5.3 | -0.1 |
| ITEM Club | May | 2.6 | 2.3 | 2.3 | 3.6 | 0.0 | 2.5 | 7.0 | 6.3 | -0.1 |
| Liverpool Macro Research | Jul * | 2.4 | 2.2 c | 4.7 d | 2.4 e | - | - | - | - | - |
| Moody's Economy.com | Jul * | 2.1 | 2.4 | 2.0 | 2.2 | 1.2 | 2.4 | 3.3 | 4.0 | - |
| NIESR | Apr | 2.8 | 1.9 | 2.3 | 3.5 | 3.8 r | 2.3 | 4.7 | 3.1 | 0.3 |
| OEF | Jul * | 2.8 | 2.7 | 2.5 | 4.1 | 3.5 | 2.8 | 5.2 | 5.0 | -0.1 |
| EC | May | 2.8 | 2.3 | 2.2 | 4.3 | 0.0 h | 2.7 | 5.2 | 4.3 | 0.1 |
| OECD | May | 2.9 | 2.4 | 2.1 | 5.2 | 0.0 h | 2.8 | 7.8 | 6.9 | 0.0 |
| IMF | Apr | 2.7 | 2.6 | 2.5 | 3.1 | 0.0 h | 2.7 | 4.8 | 4.7 | -0.1 |
| Average of Forecasts made in the last 3 months | | | | | | | | | | |
| Independent | | 2.4 | 2.2 | 2.3 | 3.4 | 2.8 | 2.4 | 4.8 | 4.3 | 0.0 |
| New (marked *) | | 2.4 | 2.2 | 2.3 | 3.1 | 2.9 | 2.3 | 4.6 | 4.1 | 0.1 |
| City | | 2.4 | 2.2 | 2.3 | 3.3 | 2.9 | 2.3 | 4.5 | 4.1 | 0.0 |
| Range of Forecasts made in the last 3 months | | | | | | | | | | |
| Highest | | 3.2 | 3.2 | 3.9 | 7.9 | 10.6 | 3.1 | 8.0 | 7.5 | 0.7 |
| Lowest | | 0.3 | 0.2 | 1.2 | -3.3 | 0.0 | -0.4 | 2.1 | -0.3 | -0.5 |
| Median | | 2.5 | 2.3 | 2.3 | 3.6 | 2.6 | 2.4 | 4.9 | 4.3 | -0.1 |
| HM Treasury | Mar | 2% to 3% | 2% to 2% | 2½ | 4 to 4½ | 1.8 to 3.8 | 2% to 3% | 4% to 5% | 4½ to 5 | 0 |

Table 5 - 2007: Growth in prices and monetary indicators (% change)

July 2006 Comparison

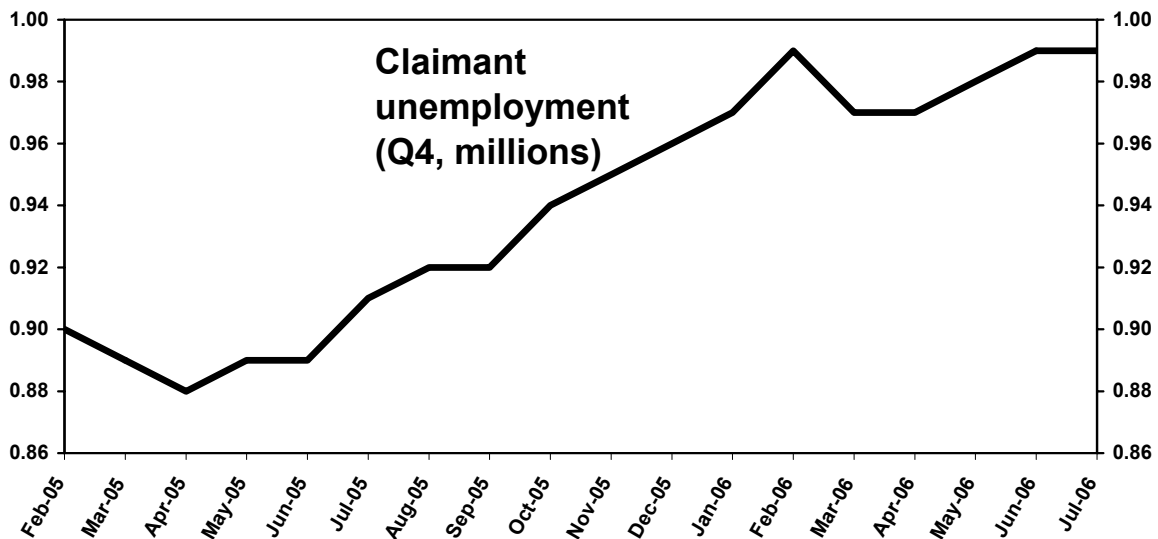
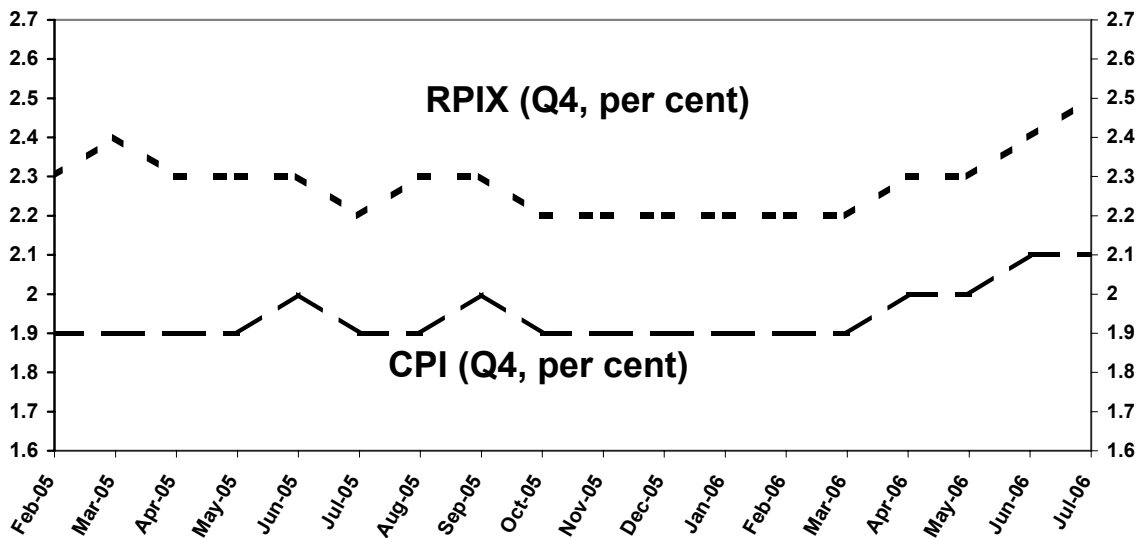
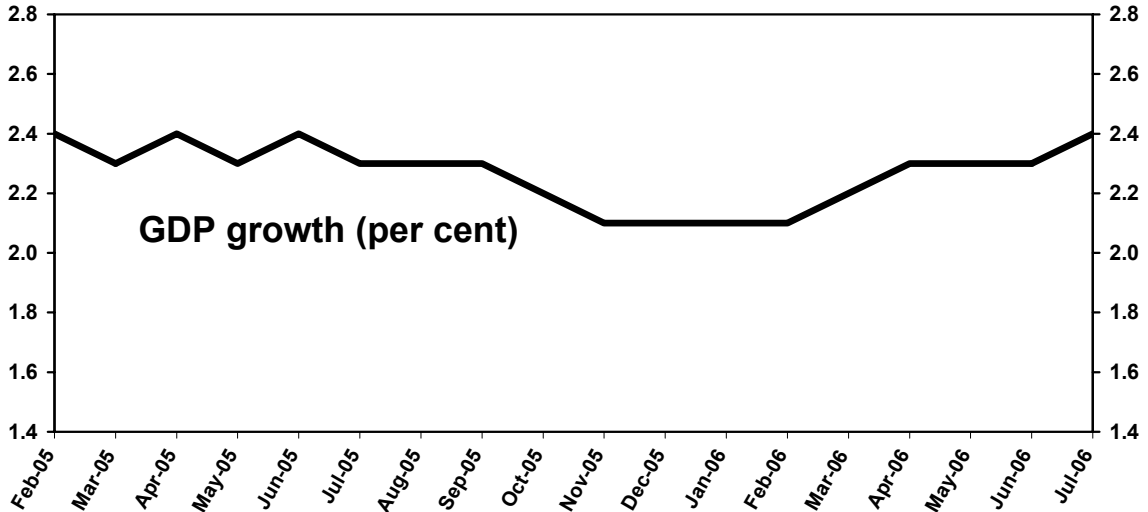
| Forecasters & dates of forecasts | | CPI (Q4) | RPI (Q4) | RPIX (Q4) | Average Earnings | Sterling Index (Q4) | Bank of England Repo Rate (Q4,%) | Oil price (\$) | M4 |
|---|-------|----------|----------|-----------|------------------|---------------------|----------------------------------|----------------|-------|
| City Forecasters | | | | | | | | | |
| ABN AMRO | Jul * | 1.9 | - | 2.2 | 4.8 gg | - | 5.00 | - | - |
| Bank of America | Jul * | 1.7 | - | 2.0 | 3.7 | - | 4.50 | 62.0 | - |
| Barclays Capital | Jul * | 1.9 | 2.3 | 2.2 | 4.6 | 97.7 | 4.75 | - | - |
| BNP Paribas | Apr | 2.1 | 2.8 | 2.3 | 4.1 | - | 4.75 | - | - |
| Bridgewell | Jul * | 2.4 | 3.4 | 3.0 | 4.0 | 94.5 | 5.50 | - | 9.3 |
| Capital Economics | Jul * | 1.4 | 2.1 | 2.0 | 4.0 | 98.4 | 4.25 | 50.0 | 8.0 |
| Citigroup | Jul * | 1.2 | 2.2 | 1.9 | 3.7 | 99.4 | 4.50 | 68.9 | - |
| Commerzbank | Jul * | 2.0 | 2.5 | 2.6 | 4.1 | 97.3 | 5.00 | 57.3 | - |
| Credit Suisse First Boston | Jan | - | - | - | - | - | - | - | - |
| Daiwa Institute of Research | Jun | 1.9 | 2.3 | 2.2 | 4.2 | 101.9 | 4.50 | 63.4 | - |
| Daiwa Securities SMBC | May | 2.0 | 2.4 | 2.2 | 4.3 | - | 4.50 | 55.0 | - |
| Deutsche Bank | Jan | - | - | - | - | - | - | - | - |
| Dresdner Kleinwort Wasserstein | Jul * | 2.4 | 2.2 | - | 4.0 | - | 4.25 | - | - |
| Economic Perspectives | Jul * | 2.4 | 2.6 | 2.6 | 3.5 | 92.0 | 4.00 | 60.0 | 7.0 |
| Fortis Bank | Dec | - | - | - | - | - | - | - | - |
| Goldman Sachs | Jul * | 1.9 | - | 2.3 | 4.5 | 93.0 j | 4.90 js | 75.0 | 9.8 j |
| Hermes | Jun | 2.0 | 2.8 | 2.5 | 4.6 | 92.0 | 4.50 | - | - |
| HSBC | May | 1.9 | 2.5 | 2.2 | 4.1 | - | 4.50 | - | - |
| ING Financial Markets | Jul * | 1.9 | - | - | 4.2 | - | 4.50 | 60.0 | - |
| J P Morgan | Jun | 2.0 | - | - | - | - | 5.00 | - | - |
| Lehman Brothers | Jul * | 1.6 | 1.7 | 1.8 | 3.2 | 95.0 | 4.00 | - | - |
| Lombard Street | May | 1.8 | 2.0 | 2.2 | 2.8 | 101.5 | 3.75 | 40.0 | 7.3 |
| MacroEcon.com | Jul * | 3.1 | 3.5 | 3.2 | 4.6 | 104.0 | 5.00 | 62.0 | 14.0 |
| Morgan Stanley | Jul * | 1.9 | 2.7 | 2.1 | 4.2 | 93.2 j | 5.00 | 68.5 | - |
| RBS Financial Markets | Jul * | 1.8 | 2.8 | 2.5 | 4.0 | 98.1 | 4.50 | 68.0 | - |
| Schroders Investment Management | Jan | 1.9 | 2.5 | 2.5 | 4.2 | - | 4.00 | 50.0 | - |
| Standard Chartered Bank | Jun | 2.0 | - | - | 4.2 | - | 4.00 | - | - |
| UBS | Jun | 2.1 | 2.4 | 2.5 | 4.2 | - | 4.75 | - | - |
| WestLB AG | Jun | 1.8 | 1.8 | 1.5 | 3.5 | - | 4.50 | 65.0 | 10.0 |
| Williams de Broe | Jun | 1.9 | 2.4 | 2.6 | 4.7 | 91.5 r | 5.70 | 70.3 | 6.8 |
| Non-City Forecasters | | | | | | | | | |
| Cambridge Econometrics | May | 2.1 k | 2.5 k | 2.0 k | 4.4 n | 102.9 k | 4.80 ks | 63.5 | - |
| CBI | Jun | 2.2 | 2.7 | 2.4 | 3.9 | 101.0 r | 4.50 | 63.5 ii | - |
| CEBR | Jul * | 1.9 | 2.2 | 2.2 | 3.6 | - | 4.25 | 62.1 | - |
| Experian Business Strategies | Jul * | 1.9 | 2.3 | 2.4 | 3.9 | 95.7 | 4.00 | 54.5 | - |
| EIU | Jan | - | - | - | - | - | - | - | - |
| Global Insight | Jul * | 1.9 | 2.6 | 2.3 | 4.3 | - | 4.75 | 63.5 | 8.1 |
| ITEM Club | May | 1.8 | 2.6 | 2.5 | 4.7 | 96.0 | 4.50 | 55.0 | 7.5 |
| Liverpool Macro Research | Jul * | - | - | 1.9 | 4.1 | 100.6 | 4.50 | - | - |
| Moody's Economy.com | Jul * | 1.4 | 1.5 | 1.2 | 2.1 | - | 5.00 | 51.0 | 11.5 |
| NIESR | Apr | 2.2 | 3.2 k | 2.9 k | 4.2 r | 98.7 r | 4.70 s | 58.3 v | - |
| OEF | Jul * | 1.7 | 2.5 | 2.4 | 4.3 | 102.0 | 4.50 | 63.8 | 13.9 |
| EC | May | 2.0 | - | - | 4.4 gg | - | - | - | - |
| OECD | May | 1.7 k | - | - | 5.5 gg | - | 4.60 s | - | - |
| IMF | Apr | 2.0 | - | - | - | - | - | - | - |
| Average of Forecasts made in the last 3 months | | | | | | | | | |
| Independent | | 1.9 | 2.4 | 2.3 | 4.0 | 98.1 | 4.58 | 60.9 | 9.4 |
| New (marked *) | | 1.9 | 2.4 | 2.3 | 3.9 | 98.2 | 4.59 | 61.8 | 10.3 |
| City | | 2.0 | 2.5 | 2.3 | 4.0 | 97.9 | 4.60 | 61.7 | 8.9 |
| Range of Forecasts made in the last 3 months | | | | | | | | | |
| Highest | | 3.1 | 3.5 | 3.2 | 4.7 | 104.0 | 5.70 | 75.0 | 14.0 |
| Lowest | | 1.2 | 1.5 | 1.2 | 2.1 | 92.0 | 3.75 | 40.0 | 6.8 |
| Median | | 1.9 | 2.4 | 2.2 | 4.1 | 98.1 | 4.50 | 62.1 | 8.1 |
| HM Treasury | Mar | 2 | - | - | - | - | - | - | - |

Table 6 - 2007: Growth in other selected variables (% change)

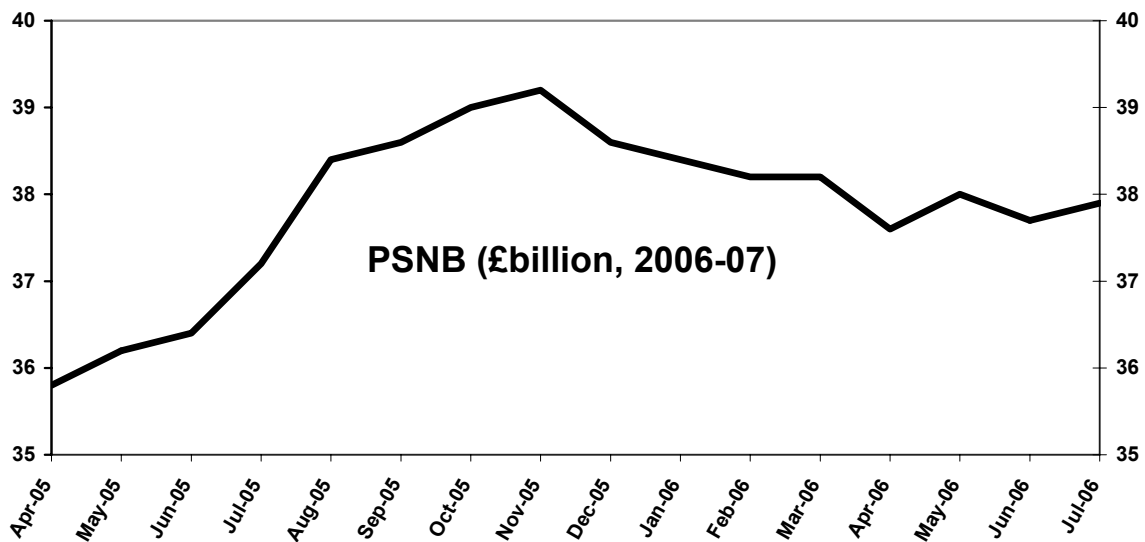
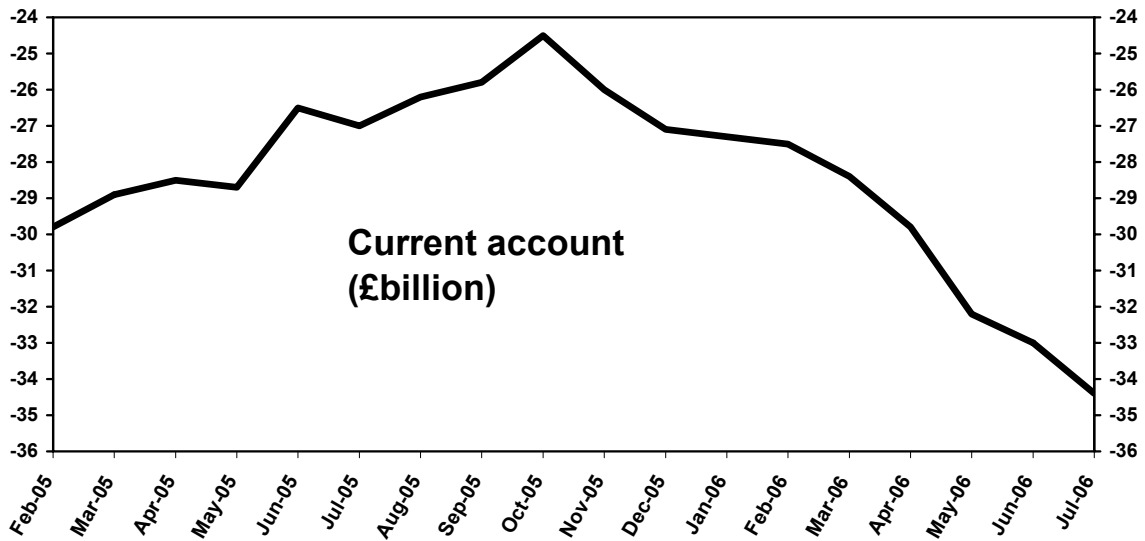
July 2006 Comparison

| Forecasters & dates of forecasts | | Real Household Disposable Income | Employment Growth | Claimant Unemployment (Q4, millions) | Manufacturing Output | World Trade in Manufactures | Current account (£bn) | PSNB (£bn 2007-08) |
|---|-------|----------------------------------|-------------------|--------------------------------------|----------------------|-----------------------------|-----------------------|--------------------|
| City Forecasters | | | | | | | | |
| ABN AMRO | Jul * | 2.4 | - | 1.65 a | - | - | -59.0 tt | 31.9 |
| Bank of America | Jul * | - | - | - | 1.8 | 7.0 | -21.0 | 42.5 |
| Barclays Capital | Jul * | 2.6 | 0.9 | 0.98 | 3.7 | - | -38.8 | 35.2 cc |
| BNP Paribas | Apr | - | 1.0 | - | 1.2 | - | -23.9 | 35.0 |
| Bridgewater | Jul * | 2.6 | 1.2 | 0.90 | 2.6 | - | -45.7 | 40.4 |
| Capital Economics | Jul * | 2.2 | 0.4 | 1.00 | 1.5 | 7.0 | -28.0 | 29.0 |
| Citigroup | Jul * | 2.4 | 0.8 | 1.09 | 0.8 | - | -49.6 | 36.9 |
| Commerzbank | Jul * | 2.0 | 0.6 | 0.92 | 0.0 | 6.1 w | -30.8 | 39.0 |
| Credit Suisse First Boston | Jan | - | - | - | - | - | - | - |
| Daiwa Institute of Research | Jun | 2.8 | 0.7 | 0.93 | 1.3 | 6.5 | -34.6 | 34.5 |
| Daiwa Securities SMBC | May | - | 0.1 | 1.02 | - | - | -27.0 | 36.0 cc |
| Deutsche Bank | Jan | - | - | - | - | - | - | - |
| Dresdner Kleinwort Wasserstein | Jul * | - | - | - | - | - | -25.0 | 38.0 |
| Economic Perspectives | Jul * | -0.5 | -1.2 | 1.40 | 0.8 | 4.0 | -16.0 | 51.0 |
| Fortis Bank | Dec | - | - | - | - | - | - | - |
| Goldman Sachs | Jul * | - | 1.0 | 1.75 a | 1.6 | - | -40.6 | 36.6 |
| Hermes | Jun | - | 0.0 | 1.10 | - | - | -25.0 | - |
| HSBC | May | - | - | 1.20 | 2.1 | - | -37.0 | - |
| ING Financial Markets | Jul * | - | - | 1.10 | 1.6 | - | -29.0 | 37.0 |
| J P Morgan | Jun | - | - | - | 1.9 | - | -42.5 | 32.0 |
| Lehman Brothers | Jul * | 1.9 | 0.5 | 1.09 | 0.1 | - | -48.9 | 42.0 |
| Lombard Street | May | 2.2 | 0.5 | 1.15 | 0.5 | - | -41.9 | 37.0 |
| MacroEcon.com | Jul * | - | 0.8 | 0.92 | - | 6.0 | -30.0 | 35.0 |
| Morgan Stanley | Jul * | 2.0 | 0.7 | - | 0.6 | - | - | 34.6 |
| RBS Financial Markets | Jul * | 3.0 | 0.8 | 0.92 | 1.9 | 5.2 | -35.6 | 34.9 |
| Schroders Investment Management | Jan | - | 0.0 | 1.10 | 1.9 | - | -29.0 | 45.0 |
| Standard Chartered Bank | Jun | - | - | 1.00 | - | - | -29.0 | 32.0 |
| UBS | Jun | - | - | 0.90 | 1.2 | - | -37.1 | 34.6 |
| WestLB AG | Jun | - | 1.0 | - | 1.2 | - | -33.5 | - |
| Williams de Broe | Jun | - | 0.7 | 1.02 | 0.4 | 8.1 | -47.4 | 43.7 |
| Non-City Forecasters | | | | | | | | |
| Cambridge Econometrics | May | 2.7 | 0.7 | 1.00 k | 1.4 | 3.4 hh | -25.9 | 38.3 kcc |
| CBI | Jun | 2.3 | 1.1 | 1.05 | 0.7 | 7.5 | -34.9 | 35.3 |
| CEBR | Jul * | 2.2 | 0.3 | 1.06 | 0.8 | - | -29.8 | 39.2 |
| Experian Business Strategies | Jul * | 2.2 | 0.3 | 1.02 | 2.8 | 8.6 | -54.4 | 35.9 |
| EIU | Jan | - | - | - | - | - | - | - |
| Global Insight | Jul * | 2.5 | 0.6 | 0.95 | 1.8 | - | -29.8 | 37.2 |
| ITEM Club | May | 2.8 | 0.8 | 1.05 | 1.6 | 7.0 | -29.6 | 41.0 |
| Liverpool Macro Research | Jul * | - | - | 1.10 | - | - | -43.8 | 36.1 cc |
| Moody's Economy.com | Jul * | 3.5 | 0.4 | 1.20 | 1.2 | - | -56.1 | - |
| NIESR | Apr | 2.5 | 0.5 | 0.99 k | 2.5 | 5.7 w | -39.6 | 34.4 |
| OEF | Jul * | 2.9 | 0.7 | 0.94 | 1.2 | 6.7 | -27.2 | 32.9 |
| EC | May | - | 0.6 | 4.80 aak | - | - | -3.2 g | 2.8 kqq |
| OECD | May | - | 0.8 | 5.20 aa | - | - | -2.9 g | 3.2 eeg |
| IMF | Apr | - | 0.6 | 4.80 aak | - | 7.5 w | -2.8 g | 2.8 eeg |
| Average of Forecasts made in the last 3 months | | | | | | | | |
| Independent | | 2.3 | 0.6 | 1.0 | 1.4 | 6.7 | -35.2 | 37.1 |
| New (marked *) | | 2.3 | 0.5 | 1.0 | 1.5 | 6.3 | -35.8 | 37.4 |
| City | | 2.1 | 0.6 | 1.0 | 1.4 | 6.3 | -34.5 | 37.1 |
| Range of Forecasts made in the last 3 months | | | | | | | | |
| Highest | | 3.5 | 1.2 | 1.4 | 3.7 | 8.6 | -16.0 | 51.0 |
| Lowest | | -0.5 | -1.2 | 0.9 | 0.0 | 4.0 | -56.1 | 29.0 |
| Median | | 2.4 | 0.7 | 1.0 | 1.3 | 7.0 | -34.1 | 36.7 |
| HM Treasury | Mar | 2 to 2½ | - | - | 1¼ to 2¼ | 7 w | -36½ | 30 |

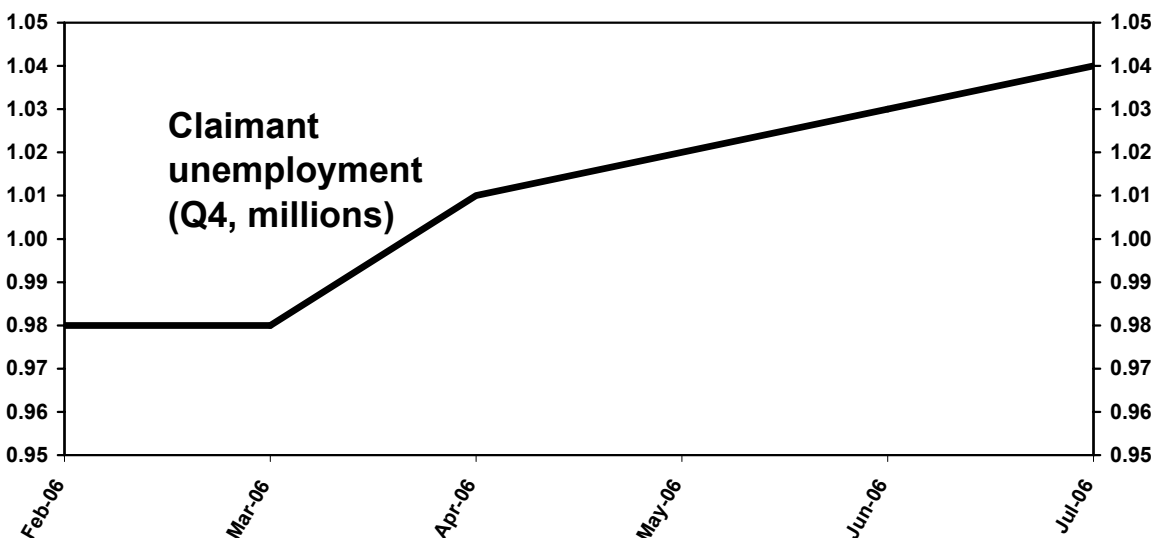
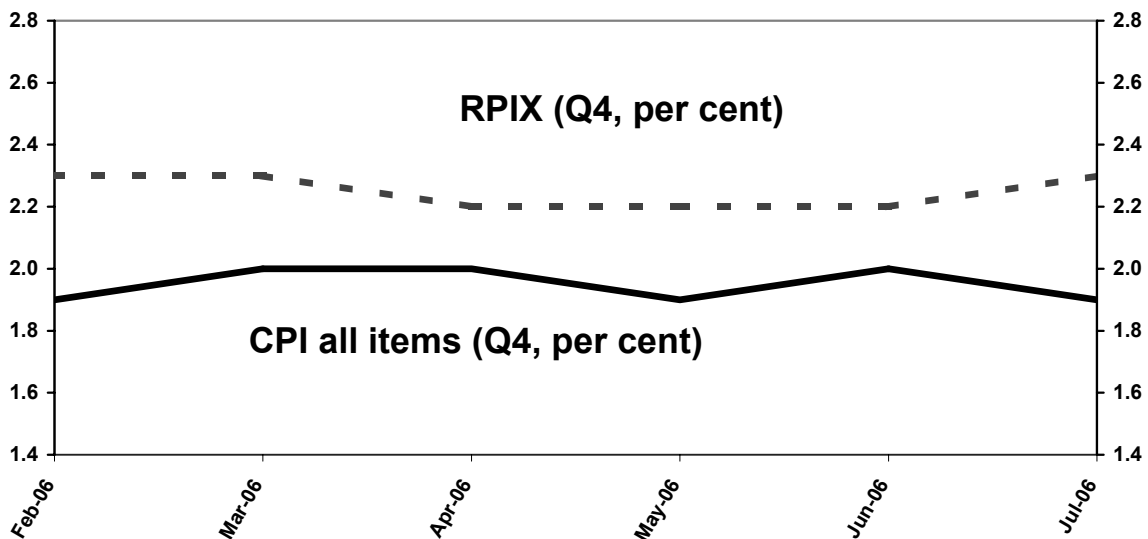
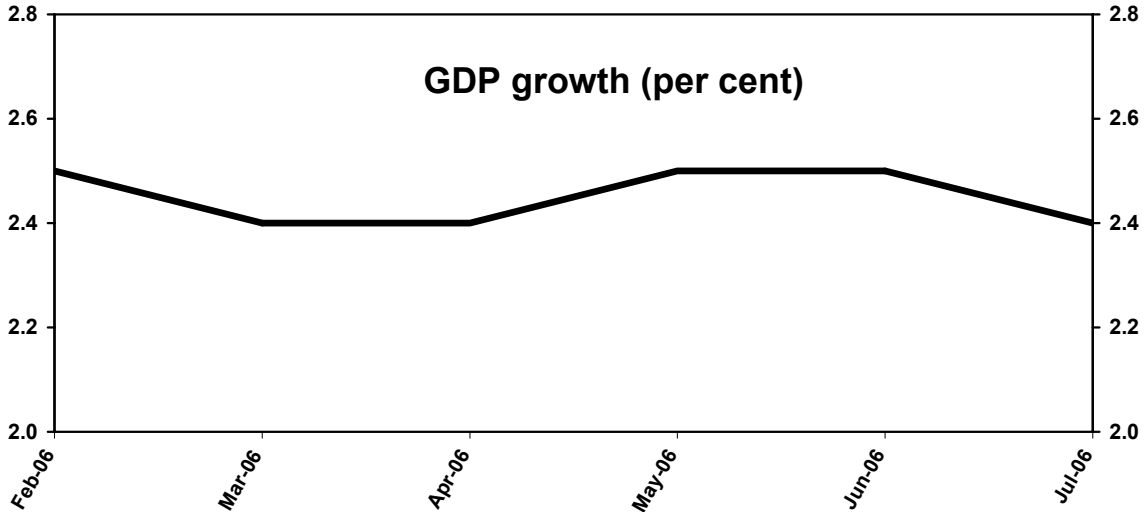
Average of independent forecasts for 2006; GDP growth, CPI & RPIX Inflation and Claimant Unemployment



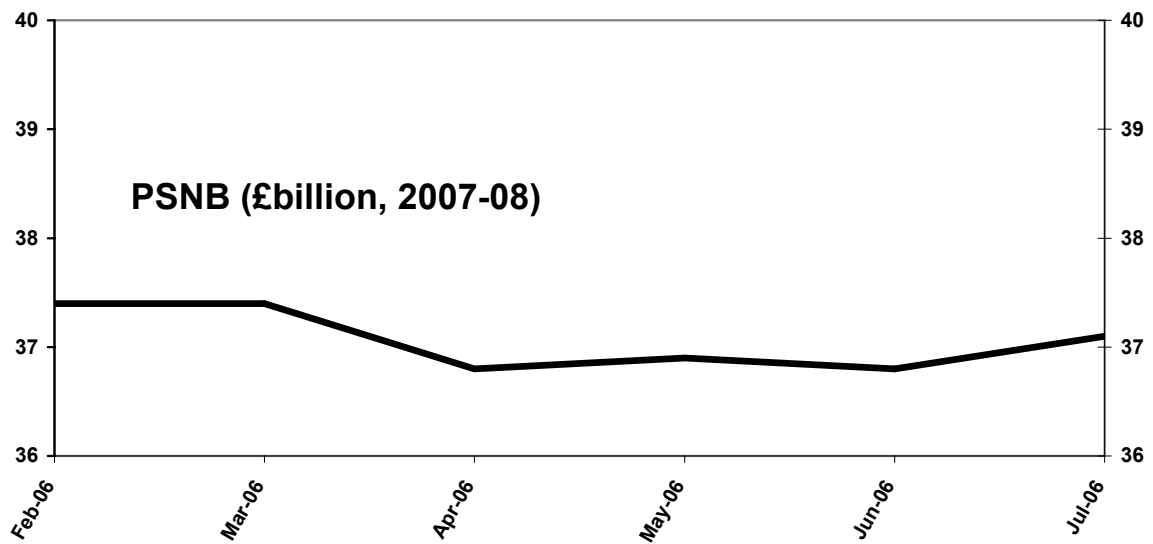
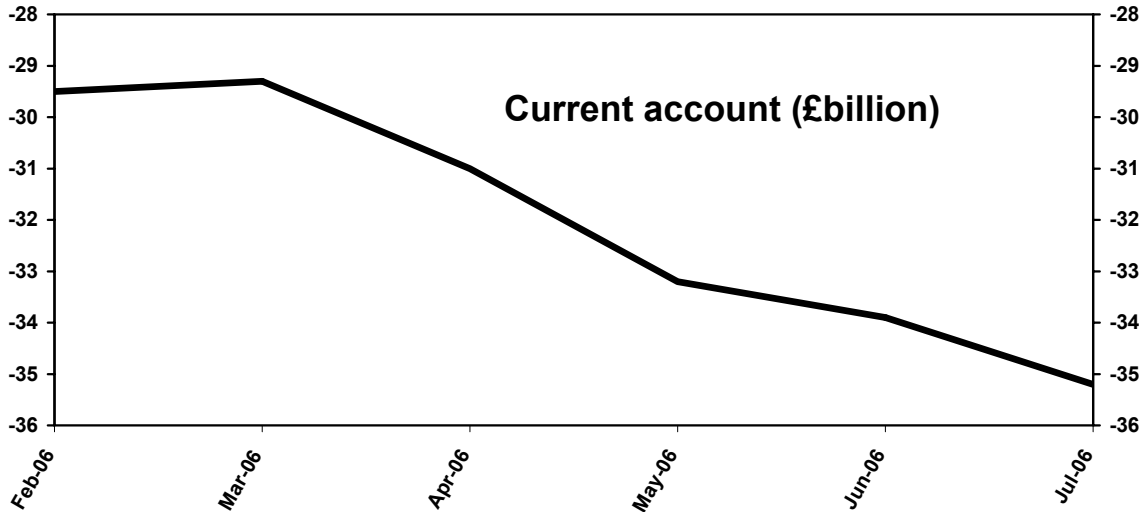
Average of independent forecasts for 2006; Current account and PSNB (2006-07, £billion)



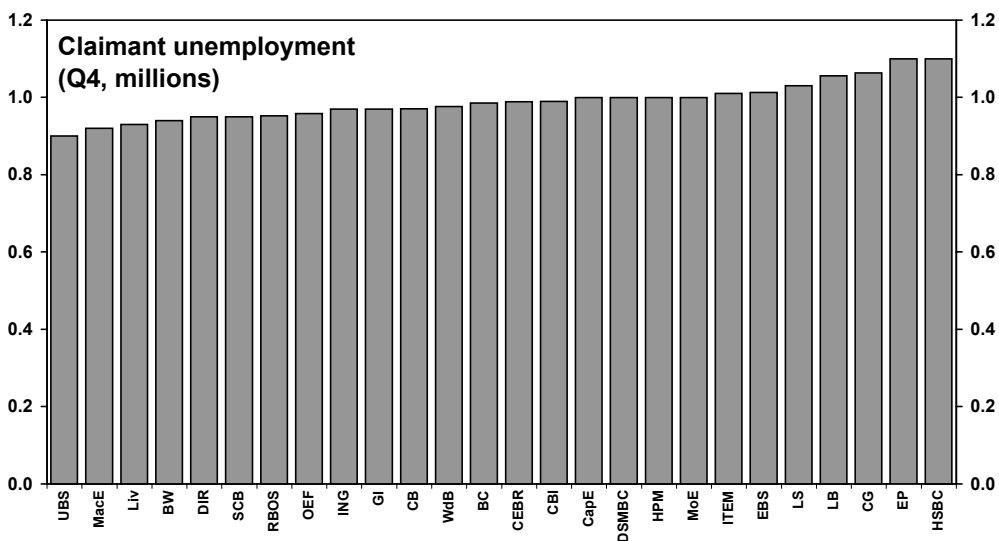
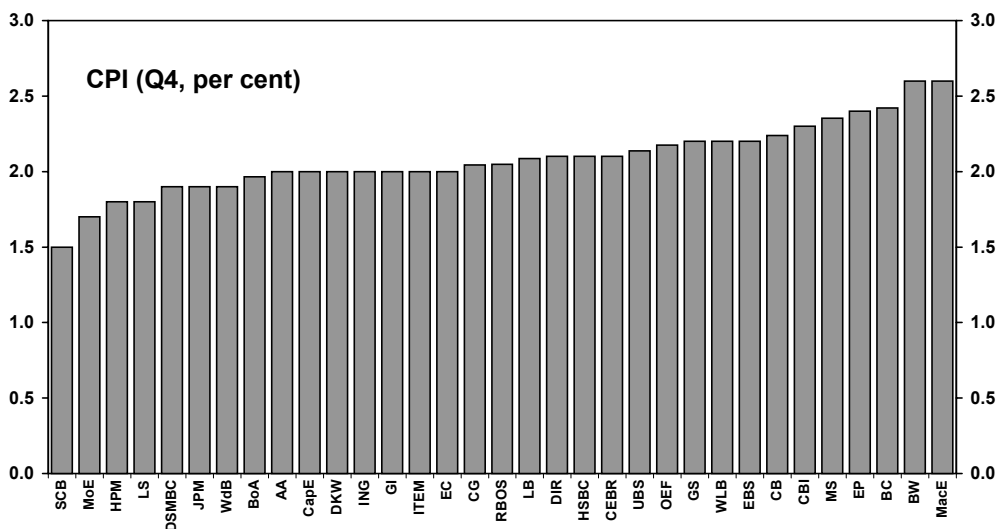
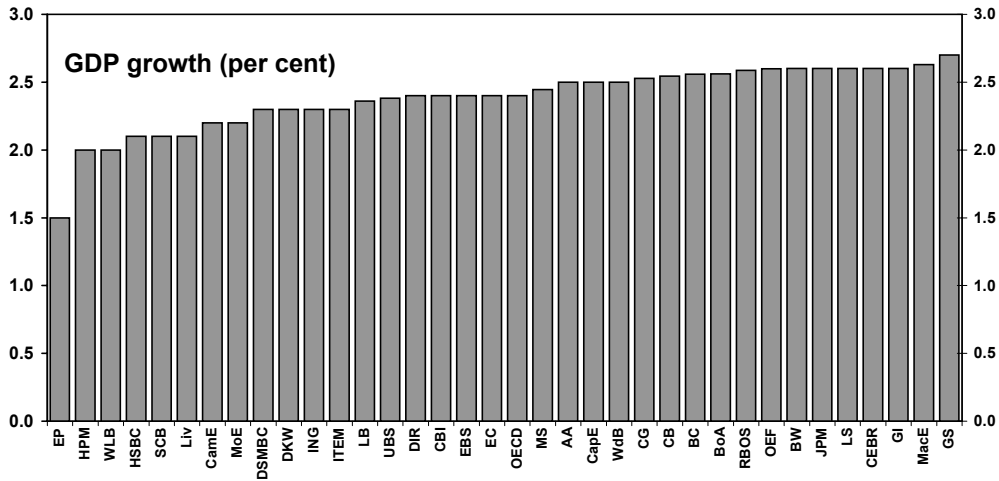
Average of independent forecasts for 2007; GDP growth, CPI & RPIX Inflation and Claimant Unemployment



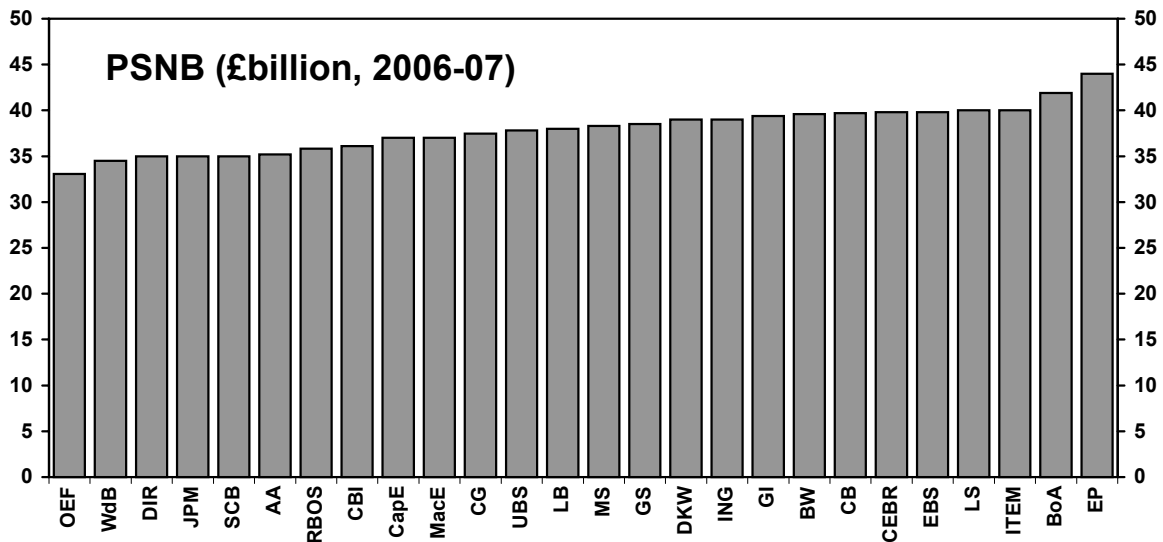
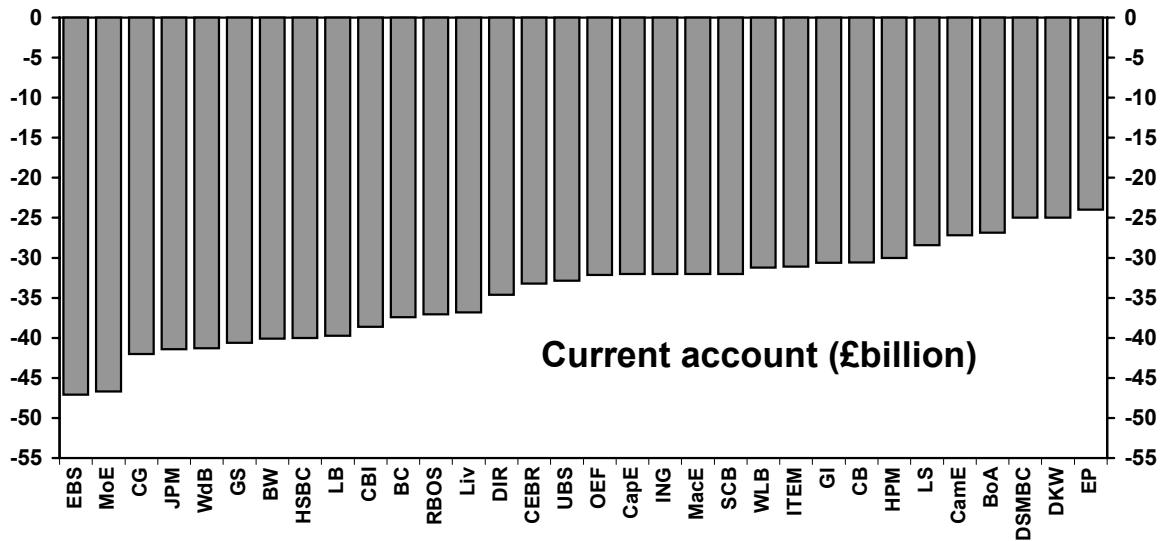
Average of independent forecasts for 2007; Current account and PSNB (2007-08, £billion)



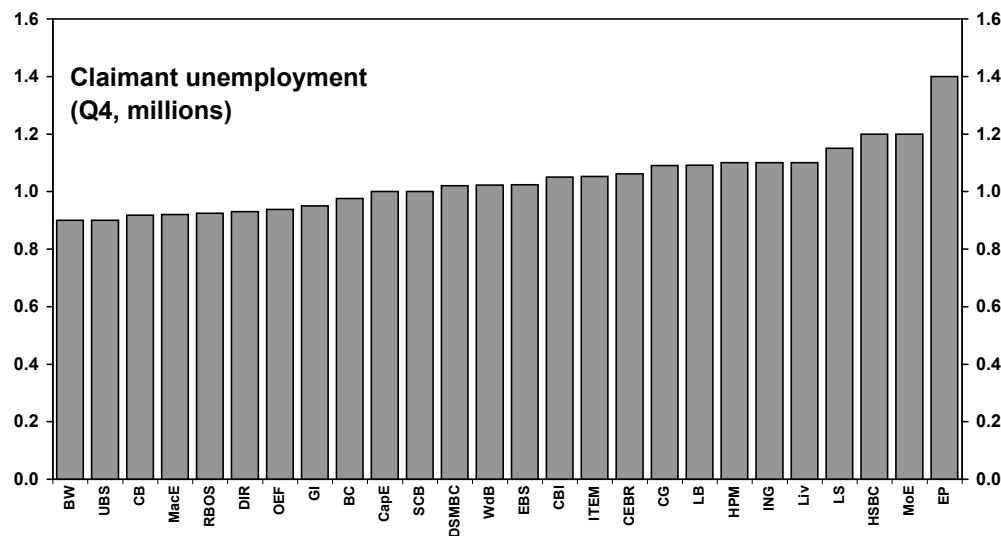
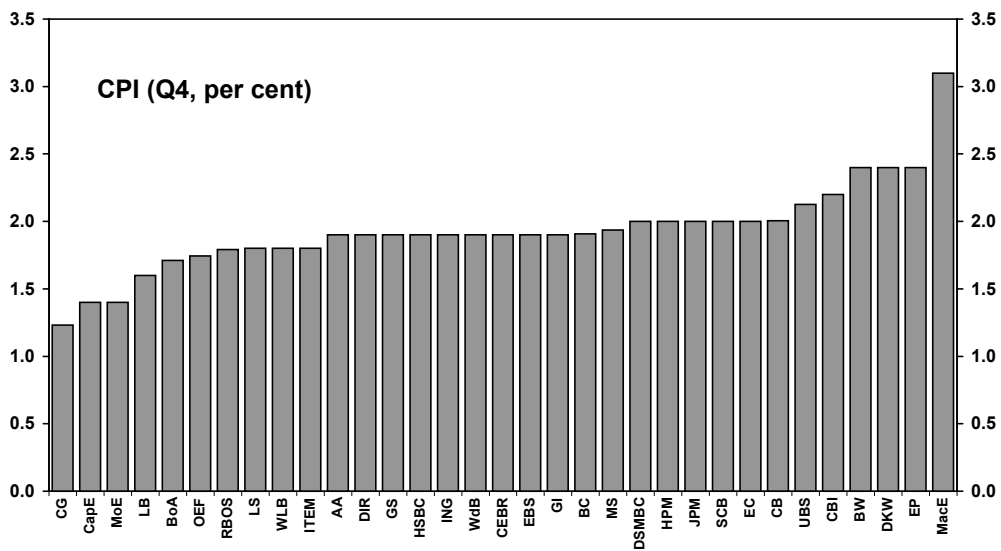
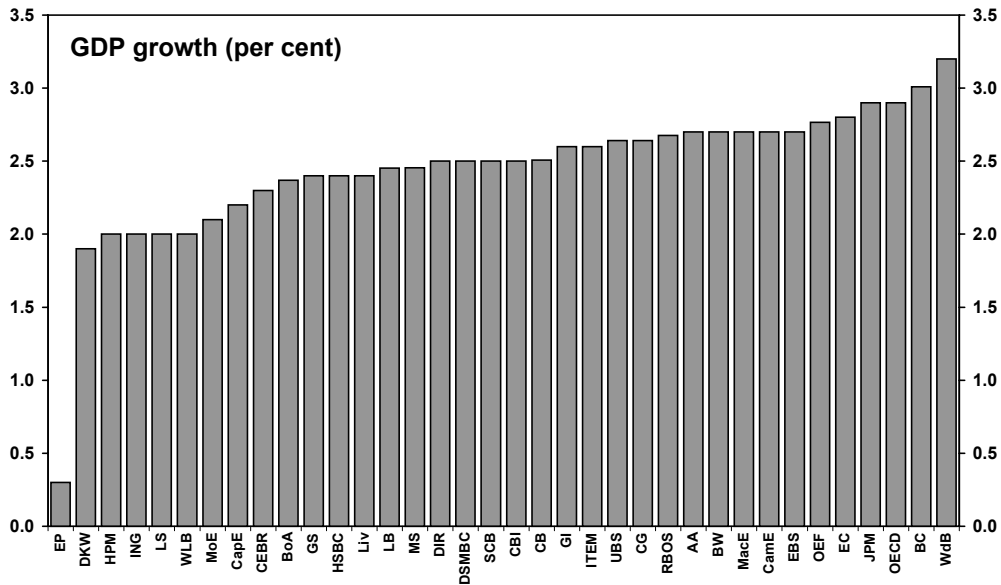
Range of Forecasts for 2006; GDP, CPI and Claimant Unemployment (millions) made in last 3 months



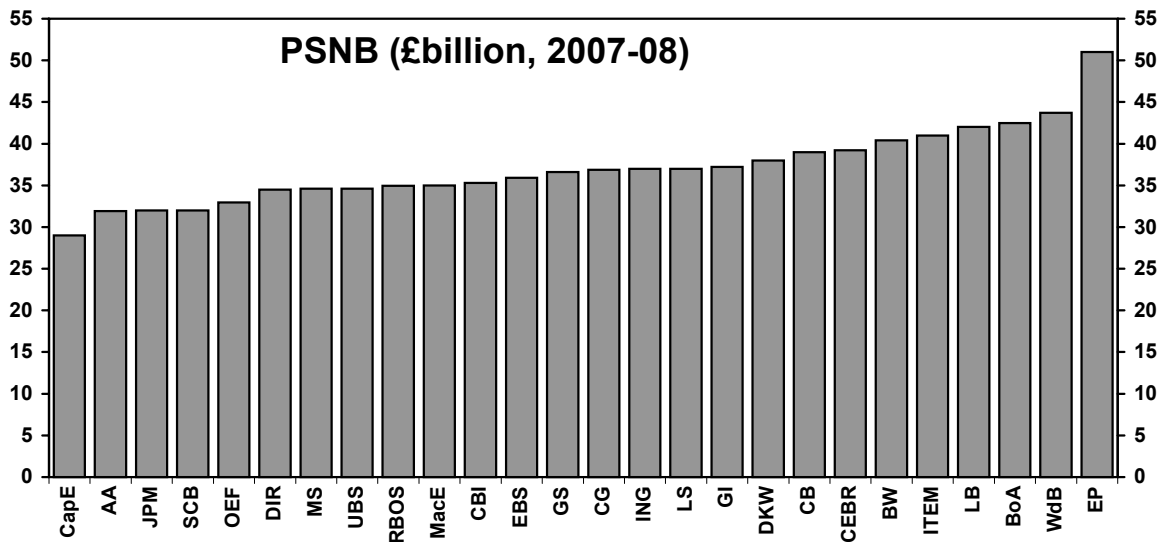
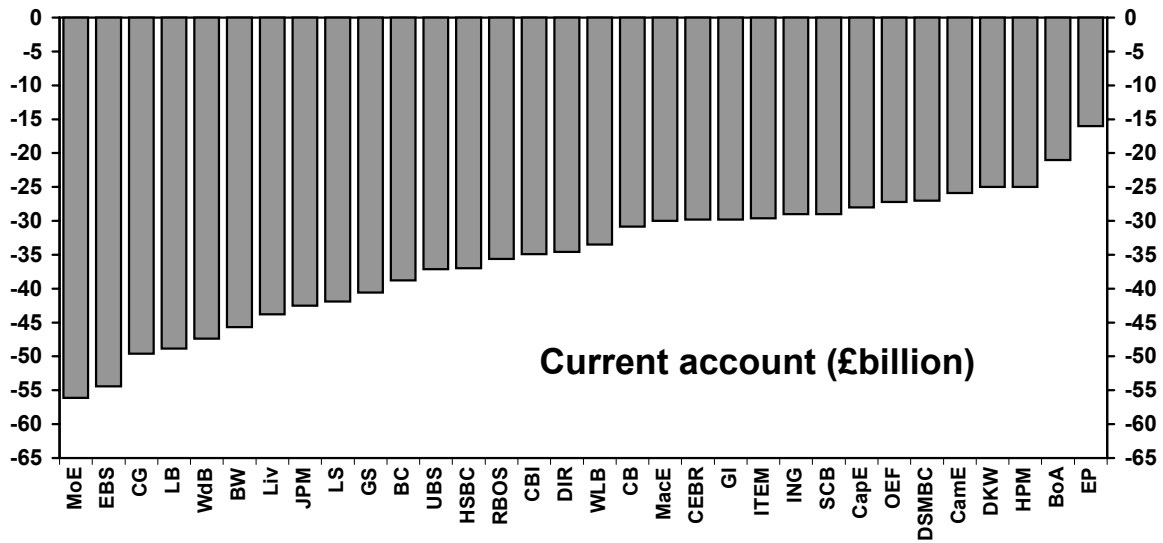
Range of Forecasts for 2006; Current Account (£bn) and PSNB (2006-07, £bn) made in last 3 months



Range of Forecasts for 2007; GDP, CPI and Claimant Unemployment (millions) made in last 3 months



Range of Forecasts for 2007; Current Account (£bn) and PSNB (2007-08, £bn) made in last 3 months



ANNEX 1: Forecasting institutions referred to in charts and tables

| | |
|--------|---|
| AA: | ABN AMRO |
| BoA: | Bank of America |
| BC: | Barclays Capital |
| BP: | BNP Paribas |
| BW: | Bridgewell |
| CamE: | Cambridge Econometrics |
| CapE: | Capital Economics Ltd |
| CG: | Citigroup |
| CBI: | Confederation of British Industry |
| CEBR: | Centre for Economics and Business Research Ltd |
| CB: | Commerzbank |
| CSFB: | Credit Suisse First Boston |
| DIR: | Daiwa Institute of Research |
| DSMBC: | Daiwa Securities SMBC |
| DB: | Deutsche Bank |
| DKW: | Dresdner Kleinwort Wasserstein |
| EBS: | Experian Business Strategies (previously BSL) |
| EC: | European Commission |
| EIU: | Economist Intelligence Unit |
| EP: | Economic Perspectives |
| FB: | Fortis Bank |
| GI: | Global Insight (previously DRI-WEFA) |
| GS: | Goldman Sachs |
| HSBC: | HSBC Economics and Strategy |
| HPM: | Hermes Pension Management Ltd |
| ING: | ING Financial Markets |
| IMF: | International Monetary Fund |
| ITEM: | ITEM Club |
| JPM: | JP Morgan Chase |
| LB: | Lehman Brothers |
| Liv: | Liverpool Macro Research |
| LS: | Lombard Street Research Ltd |
| MacE: | MacroEcon.com |
| MoE: | Moody's Economy.com Inc (previously Economy.com) |
| MS: | Morgan Stanley |
| NIESR: | National Institute for Economic and Social Research |
| OECD: | Organisation for Economic Cooperation and Development |
| OEF: | Oxford Economic Forecasting |
| RBOS: | Royal Bank Of Scotland Financial Markets |
| S: | Schroders Investment Management |
| SCB: | Standard Chartered Bank |
| UBS: | UBS |
| WLB: | WestLB AG |
| WdB: | Williams de Broë |

ANNEX 2: Data Definitions

| | |
|-----------------------------------|---|
| GDP | National accounts table C2: Code ABMI |
| Private Consumption | Households + NPISH, National accounts table C2, Code ABR+HAYO |
| General Govt consumption | National accounts table C2, Code NMRY |
| Gross fixed investment | National accounts table C2, Code NPQT |
| Change in inventories (2000, £bn) | National accounts table C2, Code CAFU |
| Domestic Demand | National accounts table C2, Code YBIM |
| Exports (Goods & Services) | National accounts table C2, Code IKBK |
| Imports (Goods & Services) | National accounts table C2, Code IKBL |
| CPI (Q4) | Consumer Price Indices release, Table 1, Code CJYR |
| RPI (Q4) | Consumer Price Indices release, Table 1, Code CZBH |
| RPIX (Q4) | Consumer Price Indices release, Table 1, Code CDKQ |
| Headline average Earnings | Labour Market Statistics table 15, Code LNNC |
| Sterling Index (Q4, 1990=100) | ONS code AGBG |
| Bank of England repo rate (Q4) | (Previously 3 month interbank rate (Q4)) |
| Oil price (\$ per barrel) | Brent crude, annual average |
| M4 growth | Bank of England Monetary and Financial statistics division Code VQJW, Calendar year (previously financial year) |
| RHDI | National accounts table J2, Code NRJR |
| Employment growth | Workforce jobs, Labour Market statistics table 4, Code DYDC |
| Claimant Unemployment (Q4, mn) | Labour market statistics table 10, code BCJD |
| Manufacturing Output | National accounts table B1, Code CKYY |
| World trade in Manufactures | |
| Current account (£bn) | Balance of payments release table A, Code HBOP |
| Public Sector Net Borrowing | Public sector finances release table PSF 1 / Public sector accounts table PSAT 1, Code ANNX |

ANNEX 3: Notation used in tables

- a: ILO unemployment - millions
- b: underlying consumers expenditure deflator
- c: non-durable consumption
- d: current and capital expenditure, including stockbuilding
- e: private sector investment, stockbuilding and durable consumption
- f: investment and stockbuilding combined
- g: as a percentage of GDP
- h: contribution to GDP growth - percentage points
- i: growth in hourly earnings
- j: end period
- k: calendar year
- m: Average of UK Brent, Dubai, and West Texas Intermediate crude spot oil prices
- n: compensation of employees/head
- o: consumer price deflator to Q4
- p: calculated from general government financial deficit figures
adjusted for privatisation proceeds
- q: forecast growth rates for Q4
- r: various definitions; refer to forecasters for details
- s: 3 month interbank rate
- u: general government current and capital expenditure plus stockbuilding
- v: average of spot price of Brent crude and Dubai light crude
- w: world trade in goods and services
- x: claimant unemployment rate
- z: OECD real imports of goods and services
- aa: ILO unemployment rate
- bb: households only
- cc: PSNCR (Formerly PSBR)
- dd: harmonized index of consumer prices (HICP)
- ee: general government financial balance
- ff: gross disposable income deflated by implicit price of private consumption
- gg: Compensation of employees (code DTWM)
- hh: World GDP
- ii: OPEC average
- jj: Industrial output
- kk: Final domestic demand
- ll: GDP deflator
- nn: VAT fraud adjusted
- pp: % change on previous year
- qq: budget deficit as % of GDP
- rr: employee jobs (code BCAJ)
- ss: financial year- end
- tt: trade balance

ANNEX 4: Organisation Contact Details

| <u>Organisation</u> | <u>Contact</u> | <u>Telephone number</u> |
|---|-----------------------|-------------------------|
| ABN AMRO | James Carrick | 020 7678 8199 |
| Bank of America | Matthew Sharratt | 020 7174 1633 |
| Barclays Capital | George Johns | 020 7773 4308 |
| BNP Paribas | Alan Clarke | 020 7595 8476 |
| Bridgewater | Richard Jeffrey | 020 7003 3500 |
| Cambridge Econometrics | Rachel Beaven | 01223 460 760 |
| Capital Economics Ltd | Jonathan Loynes | 020 7808 4983 |
| Citigroup | Michael Saunders | 020 7986 9297 |
| CBI | Lai Wah Co | 020 7395 8101 |
| CEBR | Jonathan Said | 020 7324 2840 |
| Commerzbank | Peter Dixon | 020 7653 7271 |
| Credit Suisse First Boston | Neville Hill | 020 7888 1334 |
| Daiwa Institute of Research | Don Egginton | 020 7597 8470 |
| Daiwa Securities SMBC | Grant Lewis | 020 7597 8336 |
| Deutsche Bank | George Buckley | 020 7545 1372 |
| Dresdner Kleinwort Wasserstein | Marchel Alexandrovich | 020 7475 2472 |
| Experian Business Strategies (previously BSL) | Neil Blake | 020 7355 8233 |
| EC | John Sheehy | 0032 2 299 33 99 |
| EIU | Phillip Whyte | 020 7830 1287 |
| Economic Perspectives | Peter Warburton | 01582 696 999 |
| Fortis Bank | Nick Kounis | 0031 20535 7106 |
| Global Insight (previously DRI-WEFA) | Howard Archer | 020 8544 7893 |
| Goldman Sachs | Ann Terry | 020 7774 1166 |
| Hermes Pensions Management Ltd | Yasushi Okuda | 020 7680 2395 |
| HSBC | John Butler | 020 7991 6718 |
| ING Financial Markets | James Knightley | 020 7767 6614 |
| ITEM club | Peter Spencer | 01904 433771 |
| J P Morgan | Malcolm Barr | 020 7777 1080 |
| Lehman Brothers | Alan Castle | 020 7102 7745 |
| Liverpool Macro Research | David Meenagh | 029 2087 5198 |
| Lombard St Research Ltd | Michael Taylor | 020 7382 5930 |
| MacroEcon.com | Mark Nielson | 646 621 6828 (USA) |
| Moody's Economy.com (previously Economy.com) | Paul Guest | 020 8785 5616 |
| Morgan Stanley | Melanie Baker | 020 7425 8607 |
| Morgan Stanley | Vladimir Pillonca | 020 7425 5839 |
| NIESR | Rebecca Riley | 020 7222 7665 |
| Oxford Economic Forecasting | Adrian Cooper | 01865 268 900 |
| Royal Bank of Scotland | Geoffrey Dicks | 020 7085 4277 |
| Schroders Investment Management | Richard Batley | 020 7658 2011 |
| Standard Chartered Bank | Gavin Redknapp | 020 7280 6071 |
| UBS | Amit Kara | 020 7568 3522 |
| WestLB AG | Alexander Krueger | 0049 211 8267 1749 |
| Williams de Broë | David Smith | 020 7898 2402 |